

## Vault Insurance

# Wildfire Protection Team (WPT)

At Vault Insurance, we know that protecting your home is about more than just coverage — it's about taking proactive steps to prevent damage before it happens. That's why we've partnered with **RedZone**, a leader in wildfire mitigation, to bring you enhanced real-time monitoring and emergency response services. Vault's Wildfire Protection Team (WPT) provides on-site inspections, on-the-ground support, and continuous monitoring when it matters most.

### How the Wildfire Protection Team Works

The Wildfire Protection Team focuses on reducing wildfire risks before they arise. While we're not a fire department, our experts provide thorough on-site inspections and wildfire response services, helping you enhance your home's defenses against fire threats. **The service features:**

#### On-Site Inspections

Our Wildfire Protection Team starts with an in-depth exterior inspection of your property. These inspections are designed to identify potential wildfire hazards and vulnerabilities, giving you peace of mind that your home is as fire-resistant as possible.



During the inspection, we assess:

- **Structure Resilience** We look for vulnerabilities in your home's construction that could make it more susceptible to wildfire damage, such as combustible building materials and ember entry points.
- **Defensible Space** Our specialists ensure that your home has adequate defensible space, free from combustible materials such as bark mulch within key zones around the property.
- **Vegetation Management** Trees, bushes, and other vegetation can pose a serious fire risk. We'll advise on pruning or removing vegetation that could act as a fuel source.

After the inspection, our team provides a detailed report with tailored recommendations for improving your home's resilience to wildfires.

Our team will conduct regular inspections of your home, as preventative actions are essential for safeguarding it against wildfires.

#### Ongoing Support

Throughout wildfire season, our specialists remain available to answer your questions, offer advice, and update your wildfire protection plan as needed.

# Proactive Protection Through Inspections & Monitoring

## Prevention is the Key to Reducing Wildfire Risk

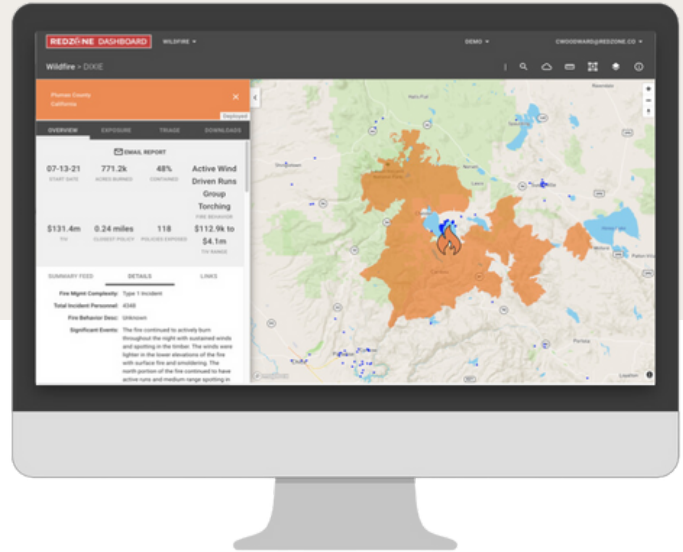
In addition to responding during wildfire season, our Wildfire Protection Team offers continuous guidance to keep your property protected year-round.

We'll work with you to:

- Strengthen your home's defenses with fire-resistant building materials.
- Improve landscaping practices to reduce fire hazards.
- Ensure that your property remains compliant with local wildfire prevention regulations.

### Real-Time Monitoring & Emergency Response

In collaboration with **RedZone**, Vault offers real-time monitoring to protect your home throughout the year. the **RedZone Intel Team** operates 24/7, tracking wildfire activity across the country and ensuring a rapid response when needed. Here's how we stay vigilant:



- **Real-Time Monitoring:** the **RedZone Intel Center** continuously monitors wildfire developments, allowing us to detect potential threats near your property before they escalate.
- **Proactive Response:** If a wildfire threatens your property and local authorities grant access, our team will take immediate action. This includes clearing combustible debris and applying **Thermo-Gel** fire retardant to safeguard your home and surrounding areas.

By combining thorough inspections and continuous monitoring through the **RedZone Intel Team**, Vault ensures that your property is protected year-round against the growing threat of wildfires.





## Eligibility, Enrollment, & Reporting a Claim

### Eligibility

The Wildfire Protection Team is available to Vault policyholders living in designated wildfire response areas, including parts of Southern California, where wildfire risk is a growing concern (see eligible zip code document).

### Our Dedication to Wildfire Mitigation

Our Fire Defense Experts are graduates of state-certified fire academies and undergo regular training to ensure they're prepared to protect your home.



### Enrolling

Enrolling in Vault's Wildfire Protection Team is designed to get you the protection you need quickly. Whether you're a new or existing policyholder, simply follow these steps:

- **Contact Your Vault Agent.** Contact your Vault insurance agent to confirm your eligibility for the Wildfire Protection Team.
- **Complete the Enrollment Form.** Your agent will assist you in completing it. Key details like emergency contact information and access instructions (gate codes, if applicable) are needed to ensure our team can access your property during an emergency.
- **Schedule Your On-Site Inspection.** Once enrolled, our specialists will contact you to schedule a thorough on-site assessment of your property's wildfire risks. This is your first step toward building a customized wildfire prevention plan.

### Stay Informed

For more tips on wildfire prevention, visit:

- [www.readyforwildfire.org](http://www.readyforwildfire.org)
- [www.firewise.org](http://www.firewise.org)

### Report a Claim

We are available **24/7** to assist our agents and customers with claims. You can reach the Vault Claims team by calling or emailing:

**844-388-LOSS (5677)**  
**ClaimsFNOL@vaultInsurance.com**